

South Jersey Transportation Authority

2021 New Jersey Asphalt Paving Association

Atlantic City Expressway • Transportation Services • Atlantic City International Airport

Stephen M. Mazur, PE, PP, PTOE, CME
Chief Engineer / Director of Engineering



Atlantic City Expressway



- 44.5 Miles from Atlantic City to Route 42 in Camden County
- 265 Lanes Miles & 88 Shoulder Miles
- 45 Ramps totaling 35 Lane and Shoulder Miles



Atlantic City Expressway



- NJDOT Specifications
- Typical Mill & Pave - 2"
- Typical Section
 - 6' Left Shoulder
 - 2 or 3 - 12' lanes
 - 10' Right Shoulder
 - Rumble Strips on Left & Right Shoulders
 - Recessed Pavement Markers



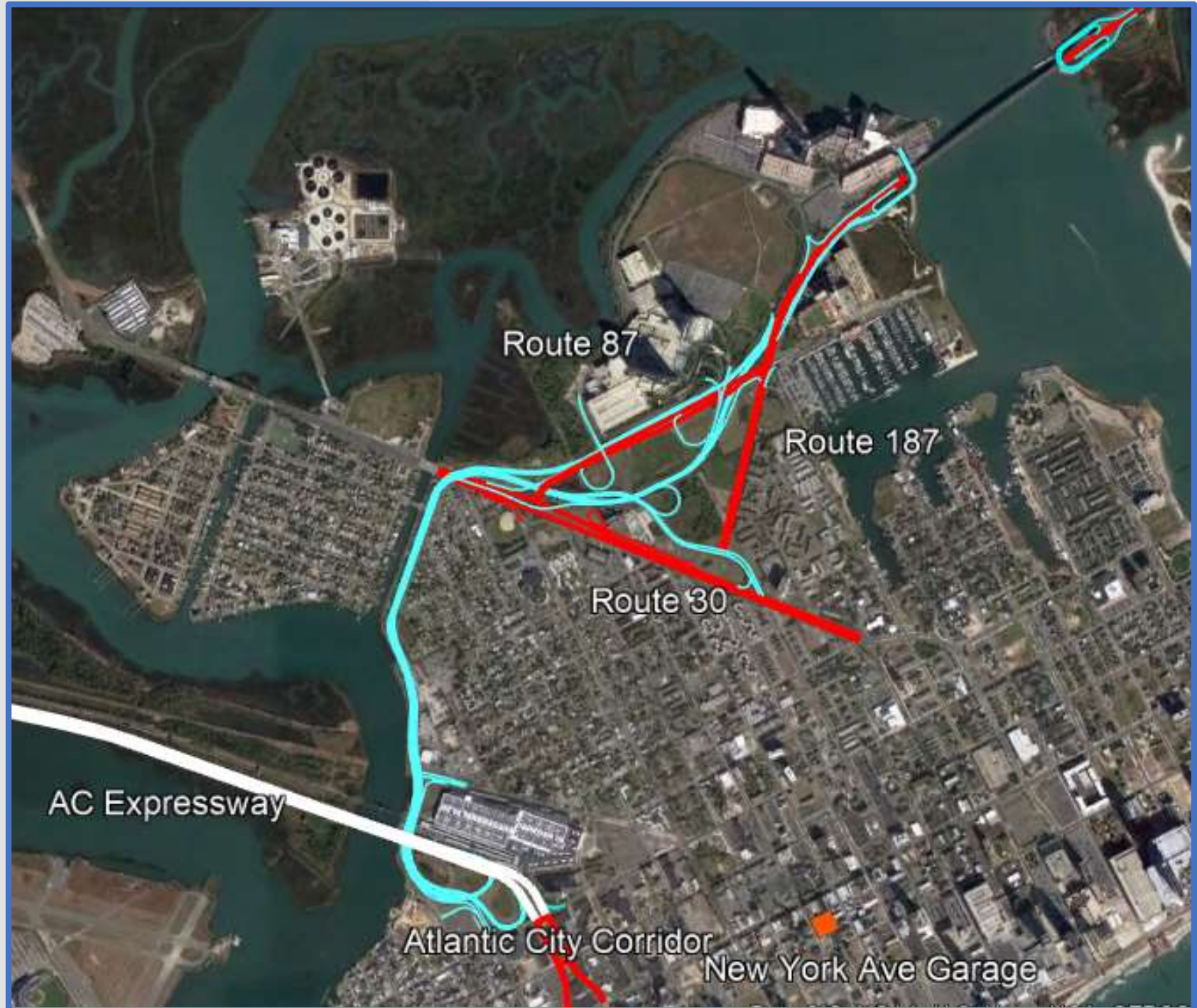
Atlantic City Expressway Resurfacing

- Fall 2020 - \$6.1M
 - 44 Lane, Shoulder, & Ramp Miles
- Spring 2021 - \$3.9M
 - 33 Lane, Shoulder, & Ramp Miles
- Fall 2021 - \$6.0M



SJTA's Atlantic City Transportation Assets

- AC Expressway Connector
- Route 30
- Route 87
- Route 187
- AC Corridor



SJTA Atlantic City Resurfacing



- AC Expressway Connector & 26 Ramps
 - 17 lane, ramp, & shoulder miles
- Route 30 - 8 lane, ramp, & shoulder miles
- Route 87 - 4 lane, ramp, & shoulder miles
- Route 187 - 6 lane, ramp, & shoulder miles
- Atlantic City Corridor – 2 lane, ramp, & shoulder miles
- **Budget – \$7.4M**

Third Lane Widening



- \$150M Project Cost
- Interchange 31 to Route 42
- Challenges
 - Environmental Constraints
 - Route 42 Connection
 - Bridge Reconstruction



Atlantic City International Airport



- Primary Runway 13-31 is 10,000 Feet Long
- Crosswinds Runway 4-22 is 6,144 Feet Long
- Twelve Taxiways



Taxiway A Rehabilitation Project

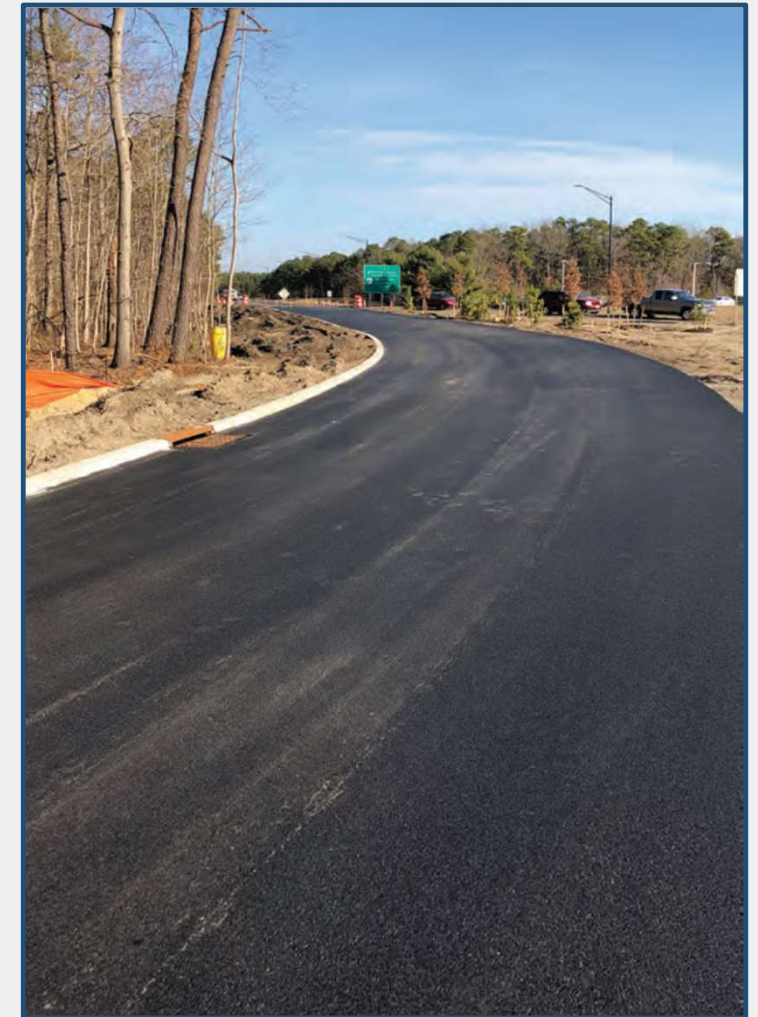
- Completed in 2017
- Total Cost - \$8.8M
- Shoulder Widening – 15 ft.



Terminal Road and Amelia Earhart Blvd Improvements



- Phase 1 – Airport Road Widening & Rehab - \$2.94M
- Phase 2 – Amelia Earhart Blvd Repaving - \$1.21M
- Phase 3 – Amelia Earhart Blvd Lighting - \$784K
- Phase 4 – Amelia Earhart Blvd Landscaping - \$224K
- Phase 5 – Tilton Road Ramp - \$1.14M
- TOTAL - \$6.3M



Deicing Containment Facility Project



- Phase 1 – Design - \$1.5M
- Phase 2 – Underground Utility Construction - \$11.6M
- **Phase 3 – Paving - \$9.6M**
- Phase 4 – Storage System & Sewer Construction - \$7.4M (2022)
- Total Cost - \$30.1M



Runway 13-31 Rehabilitation Project

- Runway 13-31 Rehabilitation Project
- Phase 1 – Repaving - \$11.7M
- Phase 2 – LED Lighting - \$3.0M (2021)
- Total Cost - \$14.7M



SJTA Website Address:
www.sjta.com

Stephen M. Mazur, PE, PP, PTOE, CME
Chief Engineer / Director of Engineering
smazur@sjta.com

South Jersey Transportation Authority

Atlantic City Expressway • Transportation Services • Atlantic City International Airport

